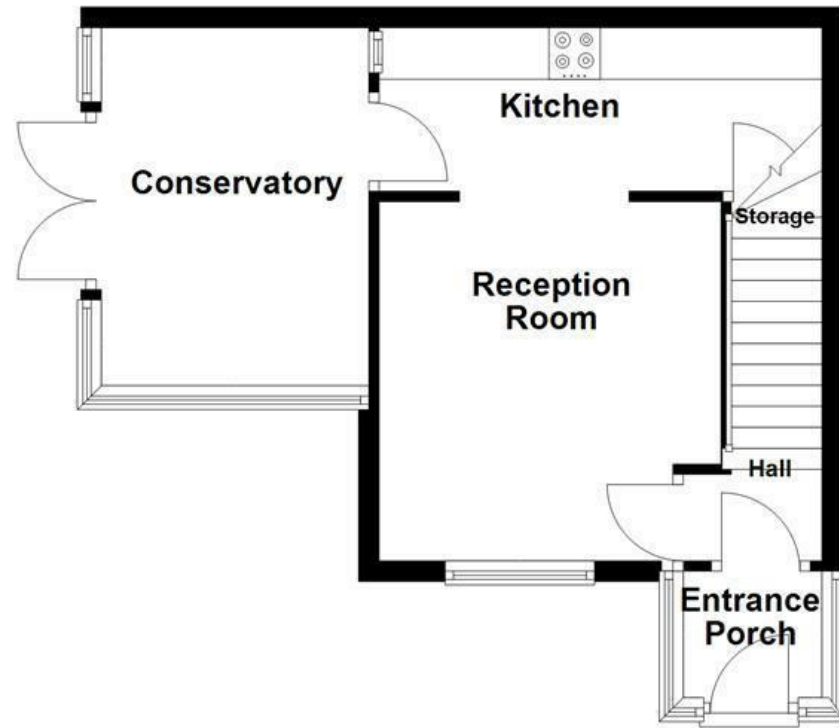
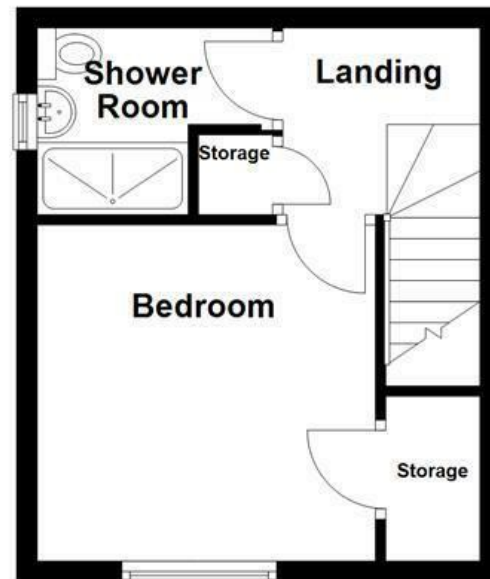


Ground Floor



First Floor



Energy Efficiency Rating		Current	Potential
Very energy efficient - lower running costs			
(92 plus) A			
(81-91) B			
(69-80) C		69	74
(55-68) D			
(39-54) E			
(21-38) F			
(1-20) G			
Not energy efficient - higher running costs			
England & Wales		EU Directive 2002/91/EC	

These particulars, whilst believed to be accurate are set out as a general outline only for guidance and do not constitute any part of an offer or contract. Intending purchasers should not rely on them as statements of representation of fact, but must satisfy themselves by inspection or otherwise as to their accuracy. No person in this firm's employment has the authority to make or give any representation or warranty in respect of the property.

Barrett Court, Bury, BL9 7PL

£130,000

Nestled in the charming area of Barrett Court, Bury, this delightful end-terrace house offers a perfect blend of comfort and practicality. This semi-detached property features one spacious bedroom and a well-appointed bathroom, making it an ideal choice for individuals or couples seeking a cosy home.

Upon entering, you are welcomed by a bright porch that leads into a hallway. This inviting space provides access to the first reception room, which boasts an open plan design that flows seamlessly into the kitchen. The kitchen, in turn, opens into a rear conservatory, creating a wonderful area for relaxation or entertaining guests, filled with natural light.

The first floor is dedicated to a generously sized bedroom, providing a peaceful retreat at the end of the day. The bathroom is conveniently located nearby, ensuring ease of access.

This property is not only charming but also practical, with its well-thought-out layout and additional conservatory spaces that enhance the living experience. With its prime location in Bury, you will find yourself close to local amenities, parks, and transport links, making it a convenient choice for modern living.

Images have been digitally staged using AI to illustrate the potential layout and appearance of the property.

Barrett Court, Bury, BL9 7PL

£130,000

 1  1  2  C

- Tenure Leasehold
- On Street Parking
- Ideal First Time Buy
- Easy Access To Major Commuter Routes
- Council Tax Band A
- One Generously Sized Bedroom
- Viewing Essential
- EPC Rating C
- Spacious Light And Airy Conservatory
- Envious Garden Space To Front And Rear Of Property

Ground Floor

Entrance Porch

4'5 x 4' (1.35m x 1.22m)

Hall

4'5 x 3' (1.35m x 0.91m)

Reception Room

11'5 x 10'4 (3.48m x 3.15m)

Kitchen

14'2 x 5'3 (4.32m x 1.60m)

Conservatory

11'5 x 8'6 (3.48m x 2.59m)

First Floor

Landing

5'7 x 5'2 (1.70m x 1.57m)

Bedroom

10'9 x 10'4 (3.28m x 3.15m)

Shower Room

7'6 x 5'8 (2.29m x 1.73m)

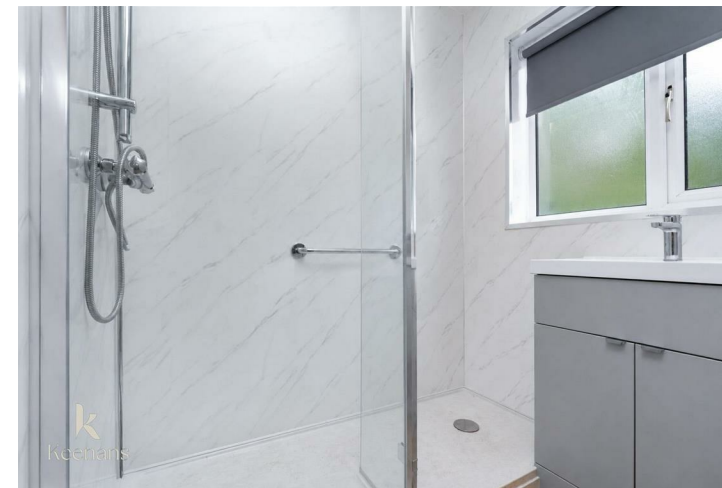
External

Front

Stone chipped garden bedding areas and paved path leading to front entrance door.

Rear

Laid to lawn garden, paving, bedding areas with mature shrubs and space for timber shed.



Tel: 01617510340

www.keenans-estateagents.co.uk